

COLTENE

July - September 2024

Promotions

NEWSLETTER



SIGN UP!

LAUNCH
PROMOTION
BRILLIANT
Lumina
TOOTH BRIGHTENING
See Inside



New **BRILLIANT Lumina**
P. 2



New **CanalPro X-Move**
P. 18



New **HyFlex OGSF Sequence**
P. 20

Professional Tooth Brightening System

BRILLIANT Lumina

Natural bright smile

H₂O₂
was yesterday!

PAP
is the future of
tooth brightening.

BRILLIANT Lumina offers you an innovative in-office solution for tooth brightening – the first formula without hydrogen peroxide and carbamide peroxide.

This is because BRILLIANT Lumina is based on the active ingredient PAP (phthalimidoperoxy caproic acid). What makes it so special: the unique formula enables the PAP concentration to be kept sufficiently high to achieve a naturally brighter smile during treatment.

No
hydrogen
peroxide



OFFER
1+1
ON BASIC KITS
ONLY FROM YOUR
TERRITORY MANAGER
While stocks last

BRILLIANT Lumina Basic Kit
REF 65002864
4x Gel, 1x Activator, 1x Patient brochure

BRILLIANT Lumina – an asset for your practice

Satisfied patients – no tooth sensitivity during or after treatment.

Gentle on the tooth structure – analyses of tooth surfaces show that BRILLIANT Lumina does not have an erosive effect on the tooth structure.

Simple treatment protocol

– the uncomplicated application of BRILLIANT Lumina can also be performed by dental practice staff.

LEARN MORE



Convincing results

Well-documented patient cases and consistent results confirm the reliability of BRILLIANT Lumina. And patient satisfaction is also impressive.

Before and after images of tooth brightening with BRILLIANT Lumina



The clinical outcomes depend on the individual circumstances of the patient.



"I've never had tooth bleaching before because I was worried about unnaturally white teeth and pain sensitivity. However, the gentle method of BRILLIANT Lumina quickly convinced me. The natural brightening of my teeth is exactly what I was looking for – and all without pain during or after treatment."

Andreas, 27 years

Light-Curing Single-Component Universal Bond

ONE COAT 7 UNIVERSAL

**THE NEW
SUPERKRAFT**

Strong individually, unbeatable together:
The **SoloCem** + **ONE COAT 7 UNIVERSAL**
bonding system

300
Applications
per bottle

- Self Etch, Selective Etch and Total Etch, a bond for all adhesive techniques
- With activator for chemically curing products
- Exceptional bonding values on enamel and dentine
- Excellent marginal seal and outstanding marginal leakage tightness
- Ergonomically shaped, triangular bottle with dropper for fine dosing

Contains MDP - One bond for all indications



**ONE COAT 7
UNIVERSAL Refill**
REF 60019539



**UNIVERSAL
ACTIVATOR 3 ml**
for self and dual
cure materials
REF 7054
1 × 3 ml Activator,
1 × 50 pcs. Microblush, black



ONE COAT 7 UNIVERSAL Intro Kit

REF 60019538
1 × 5 ml ONE COAT 7 UNIVERSAL
1 × 2.5 ml Etchant Gel S
1 × 20 pcs. Application needles
1 × 50 pcs. Brushes black
1 × Mixing well with cover

LEARN MORE



A partner you can count on – always

SoloCem

A host of different indications, yet always the same solution

You believe in speed and efficiency? Then choose SoloCem, because self-adhesive application is not only fast but also safe. However, depending on the clinical case, a stronger adhesive bond may be necessary. Even then, SoloCem is the right choice – use ONE COAT 7 UNIVERSAL as "adhesion booster" in addition.

Less administration. More time for important things

As you only need one cement for both luting options (adhesive and self-adhesive) with SoloCem, you not only save space in your inventory, but also time spent for the administration of additional products. That means: More time for what is most important – the patient



**FREE
SAMPLES
AVAILABLE**
Ask your
Territory Manager

For improved bond strength: use with **ONE COAT 7 UNIVERSAL** on enamel and dentine

LEARN MORE



SoloCem Intro Kit

REF 60013986
1 × SoloCem Dentin, 5 ml,
1 × SoloCem Trans, 5 ml
10 × Mixing Tip Brown Short Super Fine,
10 × Mixing Tip Brown Short Fine

SoloCem Refill Dentin

REF 60014062
1 × 5 ml / 10.5 g SoloCem Dentin,
5 × Mixing Tip Brown Short Super Fine
5 × Mixing Tip Brown Short Fine

SoloCem Refill White Opaque

REF 60014061
1 × 5 ml / 10.5 g SoloCem White Opaque / as above

SoloCem Refill Translucent

REF 60019840
1 × 5 ml / 10.5 g SoloCem Translucent / as above

Universal submicron hybrid composite

BRILLIANT EverGlow

Enduring gloss – made brilliant



Thanks to its sophisticated load composition, BRILLIANT EverGlow immediately produces an exceptionally smooth, glossy and satin-finished surface as soon as the filling is put in place. Polishing is simplified and a very aesthetic restoration can be done in no time. In addition, the versatile BRILLIANT EverGlow filling material excels in its enhanced gloss retention.

- Exceptional polishability and long-lasting brilliance
- Aesthetic single-shade restorations
- Versatile shade system with three translucency levels
- Excellent sculptability and smooth consistency
- Good wettability with minimal stickiness to the instrument



Dr Mihir Nanavati

“BRILLIANT EverGlow gives me consistent results”

Dr Mihir Nanavati is a dentist with a special interest in minimally invasive dentistry, composite bonding and full mouth restorative cases. He uses COLTENE BRILLIANT EverGlow universal submicron hybrid composite and, here, he tells us why:

“I have tried multiple different composite systems over the last 10 years, but none have given me the consistent results that EverGlow has. It’s a material that is easy to place, effortless to polish and incredibly stain resistant, with my bonding cases still showing fantastic lustre at five year post-placement reviews. I highly recommend using BRILLIANT EverGlow, you won’t be disappointed!”

OFFER

3+1*

ON REFILLS
EXCLUDES ECO PACKS

LEARN MORE



BRILLIANT EverGlow Refills

1 x Syringe, 3g OR 20 x Tip, 0,2

	Bleach Syringe > 60019697 Tips > 60019706		Translucent Syringe > 60019704 Tips > 60019718
	A1/B1 Syringe > 60019698 Tips > 60019707		Bleach Translucent Syringe > 60019705 Tips > 60019719
	A2/B2 Syringe > 60019699 Tips > 60019708		Opaque Bleach Syringe > 60019743 Tips > 60019746
	A3/D3 Syringe > 60019700 Tips > 60019709		Opaque A1 Syringe > 60019744 Tips > 60019747
	A3.5/B3 Syringe > 60019701 Tips > 60019710		Opaque A2 Syringe > 60023819 Tips > 60023823
	C2/C3 Syringe > 60019702 Tips > 60019716		Opaque A3 Syringe > 60019745 Tips > 60019748
	A4/C4 Syringe > 60019703 Tips > 60019717		Opaque A4 Syringe > 60023820 Tips > 60023824

BRILLIANT EverGlow EcoPacks

REF 60024160	A1/B1, Tips EcoPack,	60 x 0.2 g
REF 60024161	A2/B2, Tips EcoPack,	60 x 0.2 g
REF 60024162	A3/D3, Tips EcoPack,	60 x 0.2 g
REF 60024163	A3.5/B3, Tips EcoPack,	60 x 0.2 g
REF 60024166	A1/B1, Syringes EcoPack,	5 x 3 g
REF 60024167	A2/B2, Syringes EcoPack,	5 x 3 g
REF 60024168	A3/D3, Syringes EcoPack,	5 x 3 g
REF 60024169	A3.5/B3, Syringes EcoPack,	5 x 3 g



BRILLIANT EverGlow Flow

BRILLIANT EverGlow Flow provides convincing aesthetic results and is the perfect partner for the universal BRILLIANT EverGlow composite. The aesthetic composite is easy to handle, and suitable for a host of different indications.

BRILLIANT EverGlow Flow

1 x 2g Syringe,
5 x Standard application needles
5 x Fine application needles 0.4 mm



	Bleach BL Syringe > 60019752
	A1/B1 Syringe > 60019753
	A2/B2 Syringe > 60019754
	A3/D3 Syringe > 60019755
	A3.5/B3 Syringe > 60019756
	A4/C4 Syringe > 60019757
	Translucent Trans Syringe > 60019758
	Opaque A2/(OA2) Syringe > 60019751
	Opaque A3/(OA3) Syringe > 60023825

Reinforced CAD/CAM composite for permanent restoration

BRILLIANT Crios Block



BRILLIANT Crios is a high performance composite block for permanent restorations. The material combines all the advantages of an innovative submicron hybrid composite material with those of a CAD/CAM fabrication process for the reliable, aesthetic and fast manufacturing of restorations without a separate firing process.

CEREC/inLab – 5 blocks
5 x Blocks (size 12 or 14)

- High flexural strength for resistant restorations
- Tooth-like elasticity for a shock-absorbing effect and pleasant bite experience
- Blends in extremely well to give natural aesthetics
- High resistance and low abrasion on opposite tooth
- Easy polishing for fast shine

	Low Translucent		High Translucent	
	5 x 12	5 x 14	5 x 12	5 x 14
BLEACH	60019998 BL LT 12	60019985 BL LT 14	-	-
A1	60019999 A1 LT 12	60019986 A1 LT 14	60020007 A1 HT 12	60019994 A1 HT 14
A2	60020000 A2 LT 12	60019987 A2 LT 14	60020008 A2 HT 12	60019995 A2 HT 14
A3	60020001 A3 LT 12	60019988 A3 LT 14	60020009 A3 HT 12	60019996 A3 HT 14
A3.5	60020002 A3.5 LT 12	60019989 A3.5 LT 14	-	-
B1	60020003 B1 LT 12	60019990 B1 LT 14	60020010 B1 HT 12	60019997 B1 HT 14
B2	60020004 B2 LT 12	60019991 B2 LT 14	-	-
B3	60020005 B3 LT 12	60019992 B3 LT 14	-	-

Free Sample available
Ask your Territory Manager

BRILLIANT Crios Disc

- Made from our award winning BRILLIANT EverGlow composite
- High surface lustre for smoother restorations
- Duo shades for economy in high or low translucencies



	Low Translucent		High Translucent	
	14mm	18mm	14mm	18mm
A1	60022899 A1 LT H14	60022886 A1 LT H18	6002907 A1 HT H14	60022894 A1 HT H18
A2	60022900 A2 LT H14	60022887 A2 LT H18	60022908 A2 HT H14	60022895 A2 HT H18
A3	60022901 A3 LT H14	60022888 A3 LT H18	60022909 A3 HT H14	60022896 A3 HT H18
A3.5	60022902 A3.5 LT H14	60022889 A3.5 LT H18	-	-

The disc is available in the two different heights 14 mm/18 mm and following shades and translucencies:

LEARN MORE



Flowable dual curing posterior restorative material

Fill-Up!

A SERIOUS ALTERNATIVE TO AMALGAM

- Optimal depth polymerisation with minimal shrinkage due to dual curing system.
- Guaranteed single-layer technique - even in very deep cavities.
- Optimised sealing of margins - reduced post-operative sensitivity
- Universal shade in a convenient Automix syringe for efficient placement



Fill-Up! Kit
 REF 60019973
 Contents: 2 x 4.5 g Fill-Up! Universal,
 1 x 5 ml ONE COAT 7 UNIVERSAL,
 1 x 3 ml ONE COAT 7 UNIVERSAL Activator
 6 x Mixing tips Short Super Fine,
 8 x Mixing tips Short Fine

“ Given the move towards less amalgam use there is going to be greater need for suitable alternative materials and composite resin will lead the way. There are likely to be increased use of novel techniques including bulk-fill restorative materials. Fill-Up is one such material that allows rapid cavity filling, easy finishing and a reasonable wear resistance with simple top-up and repair options for long-term maintenance **”**



Professor Brian Millar



OFFER
 Buy any kit
GET A FREE COMPOSITE INSTRUMENT SET
UK SPECIAL PROMOTION
 Copy invoice required.
 Send to info.uk@coltene.com



Fill-Up! Refill Syringe
 REF 60019341
 1 x 4.5 g Fill-Up! Universal,
 6 x Mixing tips

Fill-Up! Economy Kit
 REF 60019355
 5 x 4.5 g Fill-Up! Universal,
 20 x Mixing Tip short fine
 15 x Mixing Tip short super fine

LEARN MORE



Modern Restorative Techniques for the Anterior and Posterior Dentition - hands on course

With Dr Asmaa Al-Taie
and Mr Jaymit Patel

Saturday 19th October 2024

Clayton Hotel, Leeds

7 City Walk, Sweet Street, Leeds LS11 9AT
(10 minutes' walk from train station)

Tel: 01132 342 340

Email: Cb.leeds@claytonhotels.com



Hands on clinical course which will explore the aesthetic clinical management of the anterior dentition with direct resin composites. It provides attendees with information on how to assess patients to optimise the success of treatment and optimise the functional and aesthetic outcome using modern restorative techniques. It will also provide an opportunity to obtain hands on experience in building up of anterior teeth to optimise the aesthetics using layering technique.

This course will also include a practical session demonstrating the use of flowable Bulkfil composites and simplified method of cusps build ups to improve your technique and confidence in practice.

Objectives

1. Discusses clinical assessment of the anterior teeth and suitable management strategies.
2. Have an update on the development of resin composites and modern bonding and polishing systems.
3. To demonstrate how to produce successful composite build ups to optimise the shape and aesthetics of anterior teeth.
4. Discuss finishing and polishing techniques of composite restorations.
5. To demonstrate how to produce posterior composites using flowable Bulkfil composites and using simplified method of cusps build ups to produce the correct anatomy.

Learning Outcomes

1. Be able to plan and undertake composite bonding to optimise the size and shape of anterior teeth and optimise aesthetic outcomes.
2. Be able to produce successful composite anterior composite build ups to optimise the shape and aesthetics of anterior teeth.
3. Be able to produce posterior composites restorations using Bulkfil composites.

GDC outcomes: C

Cost: £250 inc. vat
(Maximum 12 delegates)

**For course information,
availability and to book**



DIATECH ShapeGuard

Strong in polishing. Gentle on surfaces.



Ideal for polishing BRILLIANT Crios or any other indirect restorations. A perfect compliment to existing DIATECH diamond polishing systems

- Adapts to any surface
- Uniform pressure distribution due to flexible lamellas
- Morphology of tooth is preserved
- Fast, easy and intuitive finishing & polishing
- Optimised polishing systems for composite and ceramics



ShapeGuard Composite Polishers refill (pack of 5)

- REF 60019878 Purple
- REF 60019880 Light Blue

ShapeGuard Ceramic Polishers refill (pack of 5)

- REF 60019881 Blue
- REF 60019882 Red
- REF 60019883 Grey

ShapeGuard Zirconia Polishers refill (pack of 5)

- REF 60022004 Green
- REF 60022005 Orange

ShapeGuard Zirconia Polishing Plus Kit

REF 60022020

This kit offers a comprehensive selection of silicone polishers for prepolishing (green polishers) and high luster polishing (orange polishers) of zirconia restorations.



ShapeGuard Ceramic Polishing Kit

REF 60019917

This kit offers a comprehensive selection of silicone polishers for finishing (blue polishers), prepolishing (red polishers) and high luster polishing (grey polishers) of ceramic restorations.



ShapeGuard Composite Polishing Kit

REF 60019916

This kit offers a comprehensive selection of silicone polishers for prepolishing (purple polishers) and high luster polishing (blue polishers) of composite restorations. While minipoints are used to smoothen and polish interproximal and hard to reach occlusal areas, the cups are especially indicated for cusp polishing, but also occlusal polishing in general.

LEARN MORE



Ultrasonic Cleaning System

BioSonic UC150

Ultrasonic cleaning supports safe instrument reprocessing!

- 5.7l stainless steel tank
- Low noise during operation
- Data log function and download of usage data via USB
- Individually adjustable functions
- Offers space for several cassettes at the same time
- Use as tabletop or built-in unit
- Heating function from 25 up to 60 °C (Function can be activated separately via code)
- Glove-friendly touch screen



BioSonic UC150 Cleaner Unit UK Plug type G

REF 60021989

- 1 × Unit with display
- 1 × Recess Template
- 1 × Basket
- 1 × Recess Gasket
- 1 × Power Cord [UK]
- 1 × Drain Tube

LEARN MORE



Accessories

- REF UC53 1 × 600 ml Beaker with Cover & Positioning Ring
- REF 60022040 1 × Cassette Basket 26.8 × 15.8 × 11.5 cm
- REF 60022041 1 × Beaker Holder

Ultrasonic Solutions

- REF 60021960 1 × BioSonic UC40 dosed bottle, 1 l
- REF 60021961 1 × BioSonic UC40 refill can, 5 l

BioSonic UC50DB

BioSonic UC50DB Cleaner Unit UK Plug

REF UC50DB230UK

- With Digital Timer
- Tank capacity 3.2 l
- 1 × Tank cover
- 1 × Fingerguard instrument basket
- 1 × Owners guide



Not just any wipe!

SciCan OPTIM 1

ONE-STEP CLEANER & DISINFECTANT

Active Ingredient: 0.5% Hydrogen Peroxide



1 MINUTE
CONTACT TIME**

- Disinfection in just one minute
- Smear free cleaning
- Durable and wet for covering a wide surface area
- Safe to use on upholstery and hard surfaces
- Recommended for intra oral cameras and scanners

SciCan OPTIM 1
Ready-to-use
Pre-saturated Wipes

Standard Case
Code: OPTEU1-W12
12 standard tubs of 160 wipes

Standard Tub,
160 wipes, 15cm x 18cm

Sample Tub
20 wipes, 15cm x 18cm

LEARN MORE



** Effective within 1 minute according to European Standards; EN 14476, EN 14348, EN 13727, EN 13624, EN 16615. According to the required RKI/DVV standard in Germany SciCan OPTIM 1 is FULL VIRUCIDAL within 2 minutes



OFFER

Buy a case of 12

GET 4 SAMPLE TUBS[†] FREE

UK SPECIAL PROMOTION

Copy invoice required.
Send to info.uk@coltene.com

[†] sample product expiry date
30th September



INFECTION CONTROL

TOOTH ISOLATION



HySolate Dental Dam

Latex - Powder-free, low protein

The HySolate Dental Dam is made of pure, natural rubber latex and is powder free; a simple and clever way to reduce the risk of developing latex hypersensitivity.

The advantages of using a dental dam

- Increases visibility on the treatment site through isolation
- Acts as an infection control barrier
- Creates a dry operating field

The advantages of using HySolate

- Reduces the risk of developing latex hypersensitivity.
- Lighter colours naturally illuminate the operating field.
- Darker colours help with visual contrast.

LEARN MORE



Dental Dam BLACK EDITION

- Pre-printed to reduce working steps
- Black colour for ultimate contrast
- Less hypersensitivity – low protein and powder free latex dam

OFFER

4+1*

ON LATEX DENTAL DAM
INCLUDING BLACK EDITION

ONLY PACK SIZE
152 x 152, 36pcs.

Dental Dam Non-Latex

OFFER

4+1*

ON NON-LATEX DENTAL DAM

BOTH PACK SIZES
REF H09105 152x152, 15pcs.
REF H09106 152x152, 75pcs.

HySolate Clamps

OFFER
4+1*
 GLOSS FINISH WINGED AND WINGLESS CLAMPS SINGLES ONLY

Gloss Finish Winged Clamps



Application steps can be combined by placing the dam, clamps and frame simultaneously. Once applied, the dam is stretched under the wings of the clamp.

- | | | | |
|-----|---|------|--|
| #00 | For upper and lower premolar and anterior teeth | #8 | General purpose, upper molar clamp |
| #1 | General purpose, upper premolar clamp | #8A | Downward sloped jaws for small, partially erupted molars |
| #2 | Premolars and upper incisors | #9 | Anterior teeth |
| #2A | Premolars and upper incisors | #14 | For partially erupted or irregularly shaped molars |
| #3 | Flat jawed, small molar clamp | #14A | Downward sloped jaws for large, partially erupted molars |
| #4 | Small upper molars, deciduous teeth | #13A | Serrated Jawed, Upper Right Molars |
| #7 | Flat jawed, general purpose, lower molar clamp | #12A | Serrated Jawed, Upper Left Molars |

Gloss Finish Wingless Clamps



To apply, first position the clamp intraorally then stretch the dental dam over the clamp and tooth. Wingless clamps are designated with a "W" (wingless) for easy identification.

- | | | | |
|------|---|-------|--|
| #212 | Anterior teeth | #W8 | General purpose, upper molar clamp |
| #W00 | For upper and lower premolar and anterior teeth | #W8A | Downward sloped jaws for small, partially erupted molars |
| #W2 | Premolars and upper incisors | #W9 | Anterior teeth |
| #W2A | Premolars and upper incisors | #W14 | For partially erupted or irregularly shaped molars |
| #W3 | Flat jawed, small molar clamp | #W14A | Downward sloped jaws for large, partially erupted molars |
| #W7 | Flat jawed, general purpose, lower molar clamp | #W56 | Universal molar clamp |

Brinker Clamps (Tissue Retractors)

- Provide maximal retraction without laceration of gingival tissues
- Available as a set or sold individually (not incl. in offer)



Brinker Universal Clamps Set
 REF H01054

CanalPro Irrigation Solutions

Irrigation solutions are used to help dissolve vital and necrotic tissue, eradicate bacteria and other microorganisms, remove the smear layer, and lubricate the canal system.

As no single irrigation solutions exists that can accomplish all of the above goals, multiple solutions should be used during clinical treatment. Sodium hypochlorite (NaOCl), ethylenediaminetetraacetic acid (EDTA), and 2% Chlorhexidine (CHX) are commonly used for chemical debridement during the process of canal preparation.



CanalPro NaOCl

3% or 6%

For irrigation/debridement of root canals during and after treatment

Available in 3% and 6% formula

500ml - 3% - REF 60019655V

500ml - 6% - REF 60019656V

OFFER

3+1*

On
CanalPro NaOCl
CanalPro CHX 2%
only



CanalPro EDTA 17%

17% EDTA solution (pH 8.5)

Removes smear layer and dentin mud

Opens dentin tubules for:

- Disinfection solutions to work better
- Better adhesion of sealers and obturation materials

500ml - REF 60019651

SyringeFill Cap

REF 60019662



CanalPro CHX 2%

2% chlorhexidine digluconate solution

Substantive

Very effective against *E. faecalis* and fungal

500ml - REF 60019658

Evo Endo and COLTENE Academy bring you

Endo Roots

An intensive 3 day hands-on course
with Dr Dhiraj Arora

Day 1 Friday 8th November 2024

Day 2 Saturday 9th November 2024

Day 3 Saturday 23rd November 2024

9am - 4.30pm

etc venue, 50-52 Chancery Lane, London WC2A 1HL
(Nearest Tube Stations: Chancery Lane or Holborn)



Dr Dhiraj Arora

BDS MJDF RCS(Eng) MSc (Endo) PG Cert CE

Dr Dhiraj Arora graduated from Guy's, King's and St Thomas' Dental Institute, completing his Bachelor of Dental Surgery in 2007. In 2009, he went on to complete his postgraduate examinations and gain The Diploma of Membership of the Joint Dental Faculties at The Royal College of Surgeons of England.

Following his passion in endodontics, Dhiraj completed his Masters in Endodontic Practice at Barts and The Royal London. His postgraduate training has equipped him with the latest knowledge and skills required to provide high quality and evidence based endodontic treatment in practice. He is a member of the British Endodontic Society and the European Society of Endodontology. Dhiraj's primary research interest is in the use of CBCT and digital imaging in Endodontics.

The aspects he enjoys most about his job are helping patients and educating other dental practitioners. His keen interest in teaching, led him to gain a Postgraduate Certificate in Dental Education from Oxford Brookes University. He has been actively involved in the mentorship of newly qualified dentists and is an experienced educational supervisor with over 10 years' experience within the London Deanery. This, along with being an Honorary Lecturer in Endodontics (QMUL) allows him to combine his enthusiasm for Endodontic treatment and teaching.

An intensive 3-day, hands-on course, designed to help the general dental practitioner learn and understand modern techniques required for daily endodontic procedures, using the latest materials and equipment

We spread the course over 3 days so that you can consolidate your learning in between sessions. Also you get much more from three separate dedicated days and you don't need to find three consecutive days to be away from work.

OBJECTIVES

Following this course delegates should be able to:

- Provide an accurate endodontic diagnosis and understand treatment planning considerations for assessing the restorability of a tooth and endodontic treatment
- Gain confidence and feel comfortable with rubber dam isolation
- Achieve predictable endodontic access and canal orifice location, appreciating the anatomy of a tooth
- Understand and implement modern mechanical preparation protocols using multiple systems
- Carry out effective and safe endodontic irrigation
- Obturate canals in a predictable fashion, free of voids and to an adequate length
- Restore an endodontically treated tooth with a fundamental understanding of when deep marginal elevation is an effective treatment modality

Cost: £1,795 inc. vat

GDC Outcomes: C and D

**For course information,
availability and to book**



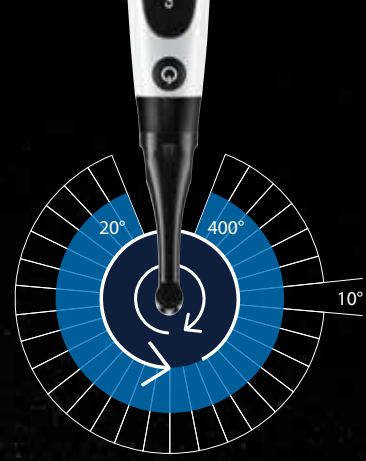
NEW

CanalPro X-Move

Includes integrated Apex Locator

Already programmed for the new OGSF sequence file

- Continuous rotation and a reciprocation motion for all common file systems
- Wireless endomotor for easy and flexible operation
- Integrated apex locator for safe and efficient treatments
- Insulated contra angle with super mini-head and slim neck provides convenient usage and free field of view
- Intuitive control display for easy handling
- Pre-programmed settings for COLTENE file systems saves preparation time



CanalPro X-Move Motor REF 65002739

- Contents:
- 1 × Motor Handpiece
 - 1 × Charging Base
 - 1 × Contra Angle Head (REF 65002744)
 - 1 × Spray Nozzle
 - 1 × Measuring Wire
 - 4 × File Holder
 - 2 × Lip Clip
 - 2 × Touch Probe
 - 2 × "O" ring
 - 1 × Power Adapter
 - 1 × Battery



CanalPro X-Move contra angle super mini-head & slim neck



Normal contra angle head & neck



LEARN MORE



Ask your Territory Manager for a demonstration

Digital assistance system for canal preparation

CanalPro Jeni

Autonomous "navigation" in the endo canal owing to revolutionary software

The new CanalPro Jeni endomotor has a patent-pending digital assistance system for canal preparation, which uses complex algorithms to control the file movement at millisecond intervals. The rotary motion and speed are continuously controlled based on current intensity and torque.

Different routes, obstacles and situations
 CanalPro Jeni is named after its developer Prof. Dr. Eugenio Pedullà and guides you safely through the traffic like a navigation system. As such, the Jeni system automatically adapts to the individual root canal anatomy, working in unison with the mechanical and chemical preparation every step of the way.

CanalPro Jeni, complete set REF 60023659

includes: 1 × Control unit, 1 × Motor with apex measuring contact, 1 × Fully insulated angled handpiece 1:1, 1 × Bluetooth foot switch, 1 × Power supply, 1 × Apex cable set, 1 × Holding bracket for apex cable

LEARN MORE



MicroMega Dual Move

Dual Move Motor

REF 52002004

Option: 1 × Contra-angle head
 REF 51200158

LEARN MORE



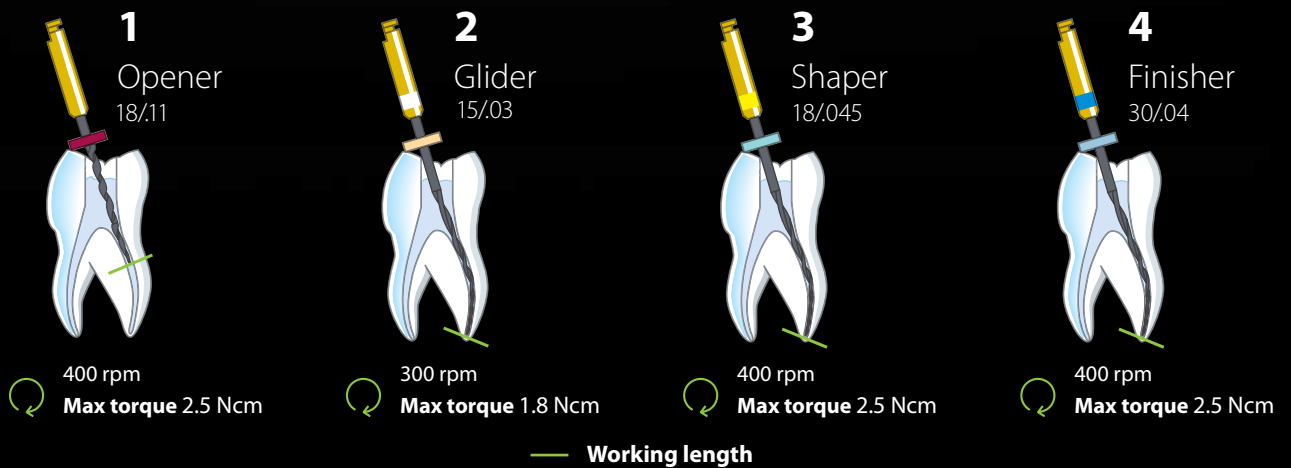
- Cordless motor, well-balanced in hand and ambidextrous
- Miniature head, 340° rotative contra-angle
- Continuous rotation or reciprocation modes
- Fully customisable
- Accurate apex localisation
- Apex location – combined use



NEW



HyFlex EDM – OGSF Sequence





Would you like fast, safe and predictable? Discover the new sequence solution!

The new HyFlex EDM OGSF sequence includes a new Orifice Opener and Glidepath file for opening the glide path, as well as a Shaping file for shaping the root canal over the full length. The defined treatment procedure makes the preparation easy and keeps the learning curve short. Due to the optimized match of tip sizes and tapers, designed in cooperation with Prof. Pedullà, the files provide a smooth feeling when shifting from one file to another and help you to keep control over the treatment.

Features and Benefits

- Efficient treatment with high cutting performance
- High fracture resistance and flexibility
- Centered preparation of the canal
- Only one shaping file
- Sterile blister
- 2 lengths: 21 and 25 mm

Shaping

HyFlex EDM OGSF Set, 4 pcs	21 mm	25 mm
OGSF Sequence	60036141	60036142
HyFlex EDM OGSF Refills, 3 pcs	18 mm	21 mm
Orifice Opener 18/.11	60036140	-
Glidepath File 15/.03	-	60023493
Shaping File 18/.045	-	60036136
Finishing File 30/.04	-	60036138
HyFlex EDM Finishing File, 3 pcs	21 mm	25 mm
Finishing File 40/.04	60022271	60019597
Finishing File 50/.03	60022272	60036598
Finishing File 60/.02	60022274	60036599

Drying and Obturation

Size / Taper	HyFlex EDM Paper Points, 100 pcs	HyFlex EDM Guttapercha Points, 60 pcs
30/.04	60036503	60036504
40/.04	60022676	60022708
50/.03	60022741	60022709
60/.02	60022740	60022710



Opener



Shaper



Glider



Finisher

OFFER

3+1

ON ALL FILE REFILLS

AUG & SEPT ONLY

LEARN MORE



Electrical Discharge Machining

HyFlex EDM

Stays on track

Manufactured from Nickel-Titanium alloy with Controlled Memory (CM) heat treatment, HyFlex EDM files allow multiple regeneration and reuse. Due to their innovative manufacturing process using electric discharge machining HyFlex EDM files have a unique surface and stand out by their durability and high fracture resistance.

- Treats 80% of all cases with the one file
- Designed for successful centered canal preparation
- Multiple regeneration and reuse
- Specially hardened for safer application
- High flexibility
- Extreme resistance to fracture

OFFER

3+1

ON ALL FILE REFILLS

AUG & SEPT ONLY

"I have been amazed at how predictably I can achieve excellent outcomes"

"Since my conversion to COLTENE HyFlex EDM files, I have been amazed at how predictably I can achieve excellent outcomes, even when taking on challenging teeth. I have gained confidence with the files' ability to effortlessly navigate sclerosed and curved canals. It is a simple system that can be used in almost all cases and it gives you a feeling of reassurance when you have such a high-quality file.

Their fracture resistance makes it possible for me to treat complex cases in my general practice setting, which is great for my patients.

Additionally, I have found the system to be very efficient, as it reduces the need for additional files, making endodontics more affordable."




Dr. Orry Torsney
Principal of Central Park Dental,
Mullingar, Co Westmeath.



 **Pre-Sterile**
for safer application

 **High Fracture resistance**
Uniquely hardened surface
reduces risk of file separation

 **Cutting Efficiency**
Hardened surface plus controlled
memory improves cutting
efficiency

 **Highly Flexible**
Controlled memory allows high
flexibility and bre-bending

**Variable Cross
Section Design**
Contributes to high
breakage resistance

Triangular cross
section at top

Trapezoidal cross
section in middle

Quadratic cross
section at tip



HyFlex EDM Files

Refill packs - x3 files

Orifice Opener 25/12

21mm -
25mm -
15mm REF 60019596



Glide Path File 10/05

21mm REF 60022269
25mm REF 60019594
15mm -



Preparation file 20/05

21mm REF 60022275
25mm REF 60022276
15mm -



OneFile 25/~

21mm REF 60022270
25mm REF 60019595
15mm -



HyFlex EDM Finishing Files

Refill packs - x3 files

Finishing File 40/04

REF 60019597



Finishing File 50/03

REF 60019598



Finishing File 60/02

REF 60019599



HyFlex EDM Glide Path Files

NEW FILE FOR COMPLEX CANALS



Glide Path HyFlex EDM File 15/03 GPF is a very secure solution for complex anatomies of the root canal.

- Easy instrumentation of very narrow canals
- Uncomplicated preparation with a limited field of vision in very narrow canals
- For creating a glide path in difficult anatomy

HyFlex EDM Glide Path File 15/03, 21 mm

REF 60023493 3 x 15/03

HyFlex EDM Glide Path File 15/03, 25 mm

REF 60023492 3 x 15/03

HyFlex EDM Kits

Simple shaping kit

21mm REF 60022267
25mm REF 60019363

1 x Orifice Opener 25/12



1 x Glide Path File 10/05



1 x OneFile 25/~



Medium shaping kit

21mm REF 60022277
25mm REF 60022278

1 x Glide Path File 10/05



1 x Preparation File 20/05



1 x OneFile 25/~



HyFlex EDM Shaping Set Max Curve 25mm

REF 60023495

1 x Glide Path File 1 x 15/03



1 x Glide Path File 1 x 10/05



1 x Preparation File 1 x 20/05



FULL RANGE OF SIZES AVAILABLE
PLEASE ASK YOUR TERRITORY MANAGER

LEARN MORE





OFFER
3+1*
 ON REFILLS
 AUG & SEPT ONLY

MicroMega One Curve mini

MicroMega One Curve Classic rotary endodontic files have undergone an upgrade and is now titled MicroMega One Curve mini.

The use of a 1mm throughout the length of the file results in an improved reduction in tissue loss during treatment. With matching MicroMega GP and Paper points this new version replaces the Classic

- Preserving pericervical dentin
- Removing minimum of tooth structure
- Respecting the root canal anatomy
- Creating optimal space for a deep disinfection and a proper obturation

'Overall, I am very happy with the MicroMega One Curve mini 4%. It is a safe, efficient and easy to use file that is ideal for shaping root canals with a conservative taper.'



Dr Nicolai Orsteen
 Specialist in Endodontics
 Root Canal Dental Referral Centre
 Richmond, London

One Curve mini	
REF 60030017	n25 4% L21 Sterile
REF 60030028	n45 4% L31 Sterile
REF 60030027	n35 4% L31 Sterile
REF 60030025	n25 4% L31 Sterile
REF 60030024	n45 4% L25 Sterile
REF 60030023	n35 4% L25 Sterile
REF 60030021	n25 4% L25 Sterile
REF 60030020	n45 4% L21 Sterile
REF 60030019	n35 4% L21 Sterile

LEARN MORE



Paper and Guttapercha Points

HyFlex EDM Paper Points and Guttapercha Points

HyFlex paper and guttapercha points are optimally matched to the HyFlex EDM files and thus contribute to the best possible treatment result. They correspond to the respective sizes and have the perfect taper to dry and obturate root canals previously prepared with HyFlex files precisely and as quickly as possible.

HyFlex EDM guttapercha points are ideal for obturating root canals. HyFlex EDM paper points are ideal for drying root canals.

- Precise fit
- Colour-coded
- Highest quality
- assorted or individual sizes
- ≥ 28 mm

HyFlex EDM Paper and Guttapercha points selection

Size / tape	Paper points 100 pcs	Guttapercha points 60 pcs
20 / .05	60022742	60022706
OneFile 25/~	60022743	60022707
40 / .04	60022676	60022708
50 / .03	60022741	60022709
60 / .02	60022740	60022710
Assortment		
20/.05 - 60/.02	60022744	60022705

HyFlex EDM OGSF Paper Points and Guttapercha Points

HyFlex EDM OGSF Paper and Guttapercha points

Size / tape	Paper points 100 pcs	Guttapercha points 60 pcs
30/.04	60036503	60036504

MicroMega One Curve mini Paper Points and Guttapercha Points

One Curve mini Paper Points and Guttapercha Points selection

Paper Points 25/.04 CP	144 pieces	60031741
Paper Points 35/.04 CP	144 pieces	60031743
Paper Points 45/.04 CP	144 pieces	60031744
Guttapercha Points 25/.04 SB	60 pieces	60031547
Guttapercha Points 35/.04 SB	60 pieces	60031548
Guttapercha Points 45/.04 SB	60 pieces	60031549



OFFER

4+1*

ON REFILLS



ParaPost System

A complete range of posts for direct and indirect indications

- Global market leader in post systems
- Proven clinical success with more than 50 studies
- More than 55 years of expertise
- One-office-visit and laboratory techniques
- Endo meets Resto – complete system with core-build ups and cements



**Fiber Lux
Introductory Kit
Metal-free Posts**
REF PF170



**X System
Introductory Kit**
REF P780T XP Titanium posts
REF P780 XP Stainless steel posts
REF P880 XH Titanium posts
REF P680T XT Titanium posts



**System Introductory Kit
Casting**
REF P781 XP



**Taper Lux
Introductory Kit
Metal-free Posts**
REF PF180

LEARN MORE



REF P780T	XP Intro Kit One-Office-Visit Technique Titanium Alloy
REF P880	XH Intro Kit One-Office-Visit Titanium
REF P780	XP Intro Kit One-Office-Visit Stainless Steel
REF P781	XP Casting Technique Intro Kit
REF P680T	XT One-Office-Visit Intro Kit Titanium
REF PF170	Fiber Lux Intro Kit
REF PF160	Fiber White Intro Kit
REF PF180	TaperLux Intro Kit/One-Office-Visit Technique

ParaPost System

REFILLS



REF PF1613	ParaPost Fiber White Posts Size 3	5 pcs
REF PF16145	ParaPost Fiber White Posts Size 4.5	5 pcs
REF PF1615	ParaPost Fiber White Posts Size 5	5 pcs
REF PF16155	ParaPost Fiber White Posts Size 5.5	5 pcs
REF PF1616	ParaPost Fiber White Posts Size 6	5 pcs
REF PF1713	ParaPost Fiber Lux Posts Size 3	5 pcs
REF PF1714	ParaPost Fiber Lux Posts Size 4	5 pcs
REF PF17145	ParaPost Fiber Lux Posts Size 4.5	5 pcs
REF PF1715	ParaPost Fiber Lux Posts Size 5	5 pcs
REF PF17155	ParaPost Fiber Lux Posts Size 5.5	5 pcs
REF PF1716	ParaPost Fiber Lux Posts Size 6	5 pcs
REF PF18145	ParaPost TaperLux Posts Size 4.5	5 pcs
REF PF1815	ParaPost TaperLux Posts Size 5	5 pcs
REF PF18155	ParaPost TaperLux Posts Size 5.5	5 pcs
REF PF1816	ParaPost TaperLux Posts Size 6	5 pcs
REF P6830	ParaPost XT Titanium Posts (.036"/0.90mm)	10 pcs
REF P6840	ParaPost XT Titanium Posts (.040"/1.00mm)	10 pcs
REF P6845	ParaPost XT Titanium Posts (.045"/1.14mm)	10 pcs
REF P6850	ParaPost XT Titanium Posts (.050"/1.25mm)	10 pcs
REF P6855	ParaPost XT Titanium Posts (.055"/1.40mm)	10 pcs
REF P6860	ParaPost XT Titanium Posts (.060"/1.50mm)	10 pcs
REF P7433	ParaPost XP Plastic Impression Posts (.036"/0.90mm)	20 pcs
REF P7434	ParaPost XP Plastic Impression Posts (.040"/1.00mm)	20 pcs
REF P74345	ParaPost XP Plastic Impression Posts (.045"/1.14mm)	20 pcs
REF P7435	ParaPost XP Plastic Impression Posts (.050" / 1.25 mm)	20 pcs
REF P74355	ParaPost XP Plastic Impression Posts (.055" / 1.40 mm)	20 pcs
REF P7436	ParaPost XP Plastic Impression Posts (.060" / 1.50 mm)	20 pcs
REF P7437	ParaPost XP Plastic Impression Posts (.070"/1.75mm)	20 pcs
REF P7463	ParaPost XP Titanium Temporary Posts (.036"/0.90mm)	20 pcs
REF P7464	ParaPost XP Titanium Temporary Posts (.040"/1.00mm)	20 pcs
REF P74645	ParaPost XP Titanium Temporary Posts (.045"/1.14mm)	20 pcs
REF P7465	ParaPost XP Titanium Temporary Posts (.050"/1.25mm)	20 pcs
REF P74655	ParaPost XP Titanium Temporary Posts (.055"/1.40mm)	20 pcs
REF P7466	ParaPost XP Titanium Temporary Posts (.060"/1.50mm)	20 pcs
REF P7467	ParaPost XP Titanium Temporary Posts (.070"/1.75mm)	20 pcs
REF P7513	ParaPost XP Plastic Burnout Posts (.036"/0.90mm)	10 pcs
REF P7514	ParaPost XP Plastic Burnout Posts (.040"/1.00mm)	10 pcs
REF P75145	ParaPost XP Plastic Burnout Posts (.045"/1.14mm)	10 pcs
REF P7515	ParaPost XP Plastic Burnout Posts (.050"/1.25mm)	10 pcs
REF P75155	ParaPost XP Plastic Burnout Posts (.055"/1.40mm)	10 pcs
REF P7516	ParaPost XP Plastic Burnout Posts (.060"/1.50mm)	10 pcs
REF P7517	ParaPost XP Plastic Burnout Posts (.070"/1.75mm)	10 pcs
REF P7843	ParaPost XP Titanium Posts (.036"/0.90mm)	10 pcs
REF P7844	ParaPost XP Titanium Posts (.040"/1.00mm)	10 pcs
REF P78445	ParaPost XP Titanium Posts (.045"/1.14mm)	10 pcs
REF P7845	ParaPost XP Titanium Posts (.050"/1.25mm)	10 pcs
REF P78455	ParaPost XP Titanium Posts (.055"/1.40mm)	10 pcs
REF P7846	ParaPost XP Titanium Posts (.060"/1.50mm)	10 pcs
REF P884	ParaPost XH Titanium Posts (.040"/1.00mm)	10 pcs
REF P8845	ParaPost XH Titanium Posts (.045"/1.14mm)	10 pcs
REF P883	ParaPost XH Titanium Posts (.036"/0.90mm)	10 pcs
REF P885	ParaPost XH Titanium Posts (.050"/1.25mm)	10 pcs
REF P8855	ParaPost XH Titanium Posts (.055"/1.40mm)	10 pcs
REF P886	ParaPost XH Titanium Posts (.060"/1.50mm)	10 pcs
REF P887	ParaPost XH Titanium Posts (.070"/1.75mm)	10 pcs

Expansion meets adhesion

roeko GuttaFlow 2

GuttaFlow 2 is a filling system for obturation of root canals containing two products in one: Guttapercha in the form of powder with a particle size smaller than 30 µm and a sealer. This filling system works with cold, flowable Guttapercha.

- Excellent flow properties
- Almost no solubility
- Dense occlusion of the root canal
- Very good tissue compatibility
- Reinfection protection
- Optimal radiopacity
- Precise root post preparation possible



GuttaFlow 2 Standard set 5ml syringe
inc. 12 mixing tips
REF 60026870

GuttaFlow 2 Refill pack 5ml syringe
REF 60026871

GuttaFlow 2 Refill pack 24 mixing tips
REF 60013719

Bioactive obturation material

roeko GuttaFlow bioseal

Dual safety stage

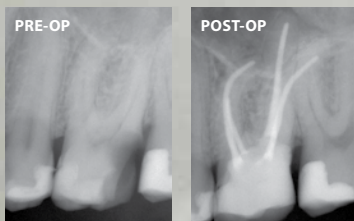
- Gutta Percha and sealer in a single application
- Nearly insoluble
- The healing process is supported by increasing the pH value



GuttaFlow bioseal Standard Set
1 × Dual-barrel syringe,
12 × Mixing tips,
1 × Mixing pads
REF 60019560

GuttaFlow bioseal Refill pack Applicator
1 × Dual-barrel syringe
REF 60019561

GuttaFlow bioseal Refill pack Mixing tips
24 × Mixing tips
REF 60019562



Images - Dr. Thomas Rieger

LEARN MORE



Dual Curing Composite Based Post Cement
and Core Build Up Material

ParaCore

- 3 indications – 1 material
- For post cementation, core construction and cementation of crowns, bridges, inlays and onlays



ParaCore		
REF 5853	Dentin Refill,	1 x 25 ml
REF 5854	White Refill,	1 x 25 ml
REF 5886	Automix White Refill,	2 x 5 ml
REF 5887	Automix Dentin Refill,	2 x 5 ml
REF 60011391	Slow Dentin Refill,	2 x 5 ml
REF 60011392	Slow Trans Refill,	2 x 5 ml

ParaCore 5 ml Intro Kit
 REF 5885
 1 x 5 ml ParaCore Dentin,
 1 x 5 ml ParaCore White
 1 x 5 ml ParaCore Dentin SLOW,
 1 x 5 ml ParaCore Trans SLOW
 3 x 3 ml ParaBond Non-Rinse,
 Conditioner + Adhesive A & B
 20 x Mixing Tip Short Super Fine

LEARN MORE



A-silicone impression material

AFFINIS

Speed – Always one of the fastest A-silicones



Still one of the fastest A-silicones

AFFINIS fast, with a maximum total setting time of 2 min 10 sec guarantees optimum efficiency and saves time.

Precise moulding of every detail even under the most difficult conditions

The highly active surfactant system is characterised by excellent surface affinity in a moist environment.



SEPTEMBER
PRODUCT OF THE MONTH OFFER
 Ask Your Territory Manager

WATCH THE VIDEO



REF 6530	AFFINIS putty soft 2 x 300 ml
REF 6531	AFFINIS fast putty soft 2 x 300 ml
REF 6535	AFFINIS putty super soft 2 x 300 ml
REF 6482	AFFINIS MonoBody Refill 2 x 380ml
REF 6487	AFFINIS Heavy body Refill 2 x 380ml
REF 6472	AFFINIS Putty Refill 2 x 380ml
REF 60019776	AFFINIS heavy body BLACK EDITION 2 x 380ml
REF 6775	AFFINIS PRECIOUS light body 2 x 50 ml
REF 6776	AFFINIS PRECIOUS regular body 2 x 50 ml
REF 6501	AFFINIS light body 2 x 50 ml
REF 6511	AFFINIS regular body 2 x 50 ml
REF 6590	AFFINIS heavy body 2 x 50 ml
REF 6601	AFFINIS fast light body 2 x 50 ml
REF 6611	AFFINIS fast regular body 2 x 50 ml
REF 6650	AFFINIS fast heavy body 2 x 50 ml

A-Silicone impression material

PRESIDENT The Original

A SMALL STEP FOR DENTISTS
A GREAT STEP FOR DENTISTRY

- High tear strength and elasticity
- Optimised flowing behavior and thixotropy
- Easier-to-mix putties
- New and more contrasting colours



OFFER

3+1*

ON UNIVERSAL MIXING TIPS

REF 60019942	putty 2 x 300 ml
REF 60019943	putty soft 2 x 300 ml
REF 60019944	putty super soft 2 x 300 ml
REF 60022166	fast putty soft 2 x 300 ml
REF 60019946	MonoBody System 360 Refill 2 x 380ml
REF 60019948	heavy body System 360 Refill 2 x 380ml
REF 60019937	Xtra light body 2 x 50 ml
REF 60019938	light body 2 x 50 ml
REF 60019939	regular body 2 x 50 ml
REF 60019940	heavy body 2 x 50 ml
REF 60019949	light body 2 x 53 ml
REF 60019950	regular body 2 x 53 ml



SEPTEMBER
PRODUCT OF
THE MONTH
OFFER
Ask Your
Territory Manager

LEARN MORE



MEET THE TEAM



Debi Boynton
07764 327 425
debi.boynton@coltene.com
North West



Sue Robins
07786 965 019
sue.robins@coltene.com
Scotland & East Midlands



Emily Downie
07889 227 424
emily.downie@coltene.com
North East



Nick O'Keeffe
00353 8641 35766
nicholas.okeeffe@coltene.com
Ireland



Emma Gilks
07906 749 682
emma.gilks@coltene.com
West Midlands & North Wales



Shah Monnan
07712 407 071
shah.monnan@coltene.com
Essex & East London



Andrew Miller
07788 583 057
andrew.miller@coltene.com
South Wales & West Country



Eva Fedorowicz
07818 424 210
eva.fedorowicz@coltene.com
North, West & Central London



Louise Fish
07788 146 130
louise.fish@coltene.com
South London & South Coast

UK OFFICE - SUSSEX



Nic Coomber
01444 235 486 - Ext 204
National Account Manager
& Marketing Strategist



Helen Chart
01444 235 486 - Ext 202
Finance & Office Manager

*Offer ends 30.09.2024. Available from participating suppliers. RRP's may vary with supplier.
For free item offers, free item from supplier unless otherwise stated.

© COLTENE – Printing errors, mistakes and changes reserved.



0800 254 5115 | info.uk@coltene.com | www.coltene.com

Coltene/Whaledent Ltd., The President Suite A, Kendal House, Victoria Way, Burgess Hill, West Sussex RH15 9NF

COLTENE